

Stenhøj Major 5230

Stenhøj Major 5230

4-post electro-hydraulic lifts

The Major 5230 lifts are electro-hydraulic 4-post lifts. The series comprises 2 basic versions – S (service) and WL (wheel alignment); both with a lifting capacity of 5.2 t. Both versions are available with 3 different platform lengths (4680, 5100 and 5500 mm).

Major 5230 S have completely flush platforms.

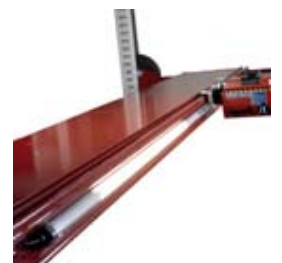
All the Major 5230 lifts are equipped with eccentric brake system, obstruction system as well as alarm signal.



Major 5230 WL versions have double slip plates.



Major 5230 is delivered as standard with fixed as well as movable cover plates.



We offer a large program of optional extras; among other things scissor jacks and lighting set.



STENHØJ
lifting the level

CORROSION-PROOF SURFACE TREATMENT

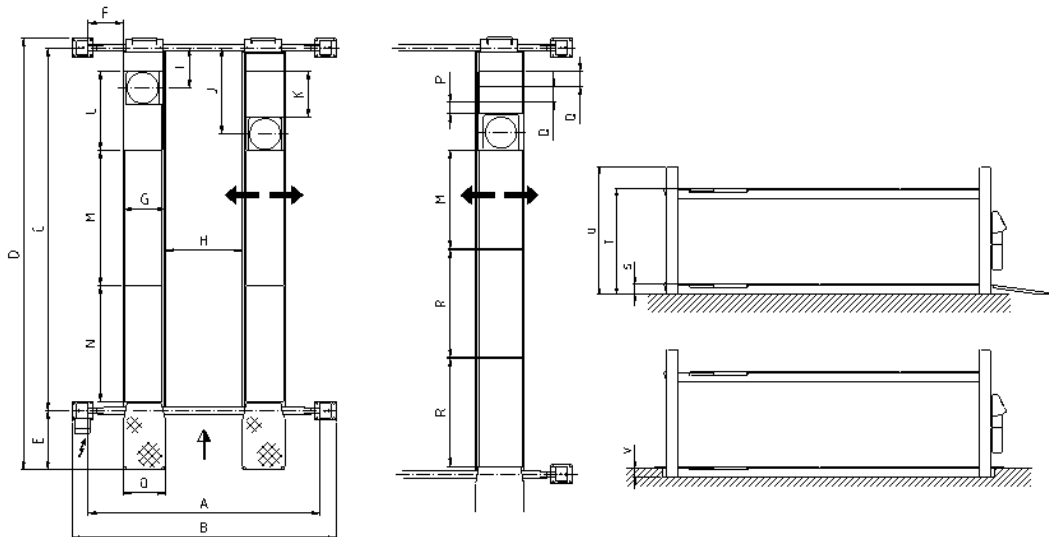
Stenhøj lifts are led through a sling purifying plant (according to SA2.50 – ISO-Norm 8501-1:2007), dipped in primer and finally led through an electrostatic powder bake plant.

Technical data

Lifting capacity	5200 kg
Lifting/lowering time	22 sec.
Motor	3 kW
Min./max. pressure	5/10 bar

Model	A	B	C	D	E	F	G	H	I	J	K
Major 5230-47S	3000	3422	4680	5564	762	450	550	805/1290			
Major 5230-51S	3000	3422	5100	5984	762	450	550	805/1290			
Major 5230-55S	3000	3422	5500	6762	1140	413	630	725/1215			
Major 5230-47WL	3000	3422	4680	5564	762	450	550	805/1290	515	1110	550
Major 5230-51WL	3000	3422	5100	5984	762	450	550	805/1290	515	1110	550
Major 5230-55WL	3000	3422	5500	6762	1140	413	630	725/1215	532	1092	

	L	M	N	O	P	Q	R	S	T	U	V
Major 5230-47S				550				140	1740	2233	130
Major 5230-51S				550				140	1740	2233	130
Major 5230-55S				630				170	1770	2233	160
Major 5230-47WL	1020	1741	1500	550				160	1760	2233	130
Major 5230-51WL	1020	1670	1990	550				160	1760	2233	130
Major 5230-55WL	1020	1270		630	150	200	1385	190	1790	2233	160



Standard colours

Red RAL 3013
 White RAL 9002

No liability accepted for specifications, which are subject to alteration.