

Stenhøj Major 6000 – 7000

Stenhøj Major 6000–7000 S

4-post electro-hydraulic lifts

Major 6000 and 7000 are among Stenhøj's 4-post lifts.

They are available as S-models (service) with flush platforms and lifting capacities of 6.2 t and 7.2 t.

The platform lengths are 5500 mm (6230) and 6000 mm (7230) respectively.

This Major series is equipped with eccentric brake system, obstruction system as well as alarm signal.

As optional extra a set for automatic movement of the movable platform is available.



Major 6000 – 7000 are delivered as standard with 1140 mm ramps.

Delivery of all Major lifts includes a height indicator arrow, which helps to ensure that platforms and cross beams are totally level when the lift is parked.

We offer a large program of optional extras; among other things lighting set and scissor jack.



STENHØJ
lifting the level

Stenhøj Major 6000 – 7000

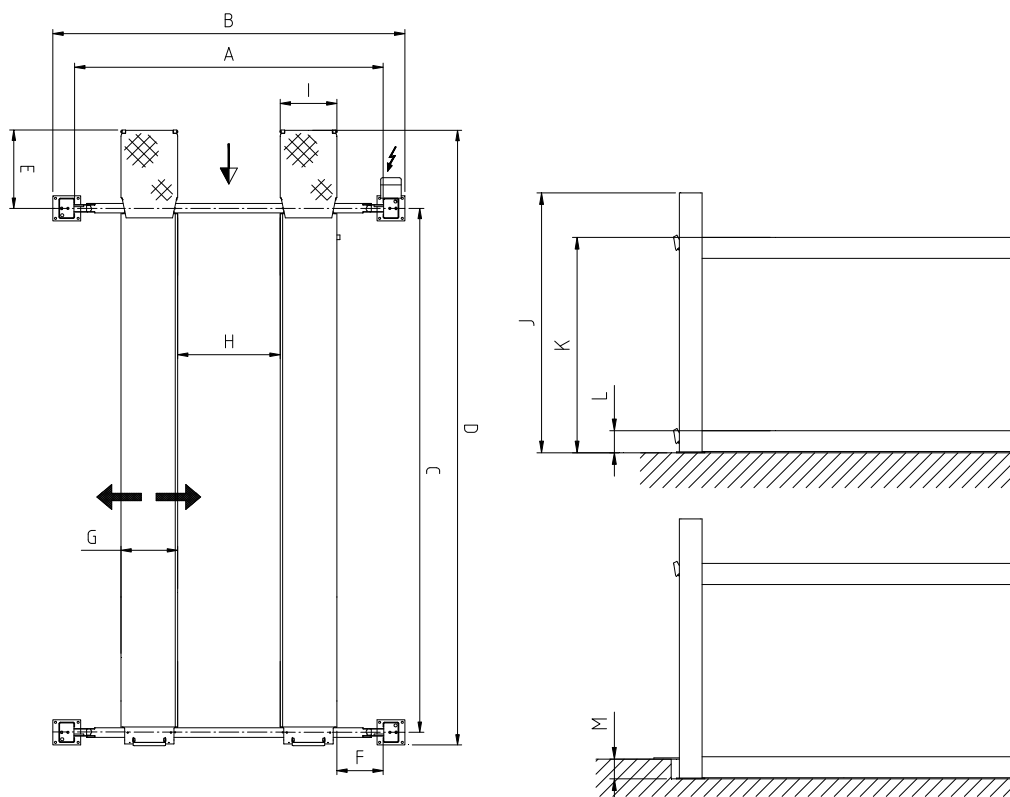
CORROSION-PROOF SURFACE TREATMENT

Stenhøj lifts are led through a sling purifying plant (according to SA 2.50 – ISO-Norm 8501-1:2007), dipped in primer and finally led through an electrostatic powder bake plant.

Technical data

	6230	7230
Lifting capacity	6200 kg	7200 kg
Lifting/lowering time	44 sec.	44 sec.
Motor	3 kW	3 kW
Min./max. pressure	5/10 bar	5/10 bar

Model	A	B	C	D	E	F	G	H	I	J	K	L	M
Major 6230-55S	3000	3422	5500	6753	1130	413	630	725/1210	630	2233	1820	170	160
Major 7230-60S	3000	3422	6000	7253	1130	413	630	725/1210	630	2233	1820	170	160



STENHØJ
lifting the level

Stenhøj Autolift A/S
Denmark

Tel: +45 76 82 13 30
Fax: +45 76 82 13 31
Mail: autolift@stenhoj.dk
Web: www.stenhoj.dk

Standard colours

Red RAL 3013
White RAL 9002

No liability accepted for specifications, which are subject to alteration