

Stenhøj Maxi

Stenhøj Maxi

4-, 6- & 8-post platform lifts

The STENHØJ Maxi program comprises 2 basic series: an electro-hydraulic 4-post series as well as an electro-mechanical 4-, 6- & 8-post series.

The Maxi lifts are suitable for general maintenance and inspection, replacement of exhaust system, engine repair and brake service.

The electro-hydraulic lifts have capacities of 8 and 10 t; and the electro-mechanical of 16, 20, 24, 32 and 40 t.

Maxi is like all other Stenhøj lifts CE-approved.



Easy adjustment of track width.

Maxi 80.

Platform lengths according to customers' requirements (Maxi 16-40).

See separate brochure for auxiliary jacks.



STENHØJ
lifting the level

Stenhøj Maxi 80-100

Stenhøj Maxi 80 - 100

4-post electro-hydraulic platform lifts

Quality to the last detail:

Friction brake system stops lift immediately in the event of cable failure.

Automatic air-operated parking system.

Pump and control unit placed on front left post.

Fine adjustment of ratchets to get 100% level platforms.

Large spring-loaded bars and rollers on platforms ensure easy adjustment of track width.



Ratchet, parking system and eccentric brake.



Pump and control unit on front left post.



Large program of optional extras; e.g. auxiliary jacks, air connection kits, lighting sets.



STENHØJ
lifting the level

Stenhøj Maxi 16-40

Stenhøj Maxi 16 - 40

4, 6 & 8-post electro-mechanical
platform lifts

Quality to the last
detail:

Each post equipped
with a gear motor
and elastic
coupling which
ensure that load
spindle/nut is
always axial.

Driving nut and
safety nut on self-
locking spindle and
adjustable
automatic
lubrication.

Obstruction
system.

Electronic
synchronization
system that
ensures max 1°
difference between
platforms
longitudinally and
transversally.



Self-locking spindle with
driving and safety nuts.

Each post equipped with
a gear motor.

Mechanical cross beam
lock stabilizes platforms
and cross beams when
parking vehicle on the
lift.



STENHØJ
lifting the level

Stenhøj Maxi

CORROSION-PROOF SURFACE TREATMENT

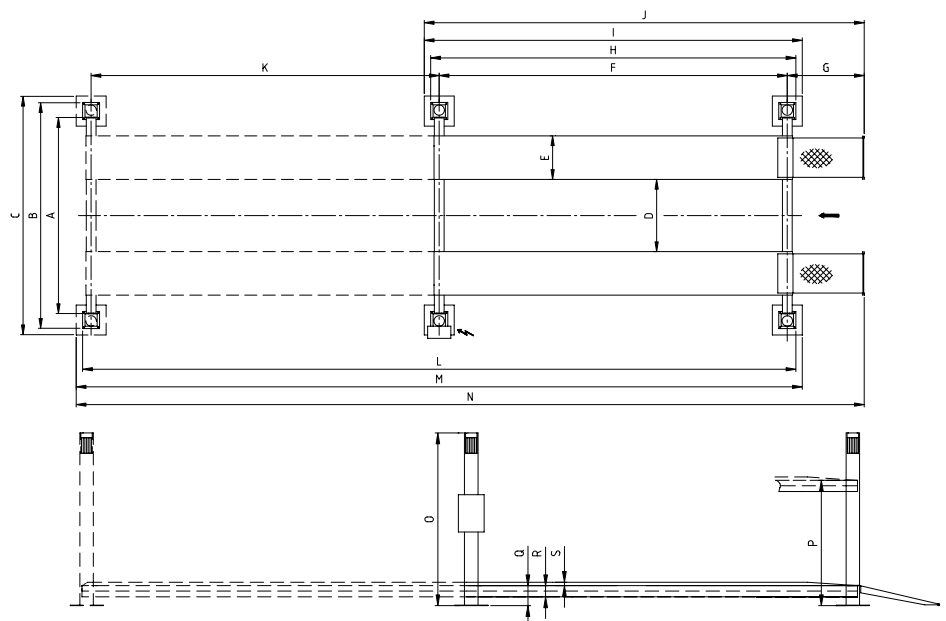
Stenhøj lifts are led through a sling purifying plant (according to SA2.50 – ISO-Norm 8501-1:2007), dipped in primer and finally led through an electrostatic powder bake plant.

<u>Technical data</u>	80	100	16	20	24
Lifting capacity	8000 kg	10000 kg	16000 kg	20000 kg	24000 kg
Lifting/lowering time	45 sec.	45 sec.	120 sec.	120 sec.	120 sec.
Motor	3.0 kW	3.0 kW	4 x 2.2 kW	4 x 2.2 kW	6 x 2.2 kW
Min./max. pressure:	7/10 bar	7/10 bar	-	-	-

Maxi 32 and 40 according to customers' specifications.

Model	A	B	C	D Min./max.	E	F	G	H	I	J
Maxi 80/100 (6 m)	3520	4000	4210	1000/1340	650	5905	1182	6185	6395	7332
Maxi 80/100 (7 m)	3520	4000	4210	1000/1340	650	6905	1182	7185	7395	8332
Maxi 80/100 truck	2620	3100	3310	525/775	650	4505	1681	4785	4995	6431
Maxi 16	3200	3680	3890	950/1180	710	7200	1260	7480	7690	8705
Maxi 16, truck	3200	3680	3890	950/1180	705	3950	2150	4230	4440	6345
Maxi 20	3470	3950	4160	950/1180	710	7500	1260	7780	7990	9005
Maxi 24	3200	3680	3890	950/1180	710	5000	1260			

	K	L	M	N	O	P	Q	R	S
Maxi 80/100 (6 m)					2354	1700	265	210	
Maxi 80/100 (7 m)					2354	1700	265	210	
Maxi 80/100 truck					2354	1700	265	180	
Maxi 16					2550	1850	295	195	75
Maxi 16, truck					2550	1850	295	195	50
Maxi 20					2550	1850	305	200	75
Maxi 24	5000	10280	10490	11505	2550	1850	305	200	75




STENHØJ
lifting the level

Stenhøj Autolift A/S
Denmark

Tel: +45 76 82 13 30
Fax: +45 76 82 13 31
Mail: autolift@stenhoj.dk
Web: www.stenhoj.dk

Standard colours

Red RAL 3013
White RAL 9002

No liability accepted for specifications, which are subject to alteration.